



2017 Synthetic Thatch Product Lines





**ENDUREED**

by GLOBALINNOVATION

*Regions* SERIES  
**VIVA** SERIES







## LET'S TAKE A TRIP TOGETHER

More than any other architectural element, thatch roofing inspires dreams of faraway places.

Endureed recreates the natural allure of thatch roofing without all the natural problems.

Our extensive collection of authentic designs makes it easy for architects, business owners and individuals to recreate these exotic destinations anywhere in the world.





## ENDUREED *Regions* SERIES

### THE HIGHEST QUALITY THATCH ROOFING

Thatched roofs are commonly used in some of the world's most exotic vacation destinations, evoking feelings of pure relaxation. Endureed Regions recreates the look, color, and feel of native natural thatching from any region in the world. With unlimited options, unmatched quality and durability, your Regions Series product is designed to look great and last for decades.



Bali



Capetown



Kilimanjaro



Somerset



Kona



Dominica







## WHEN ONLY THE BEST WILL DO

Whether it's testing from UL approved labs, ASTM construction standards, or simply **real world results** surviving all weather conditions, the Regions Series **outperforms** all other thatch products on the market today.

## OUTSMART THE ELEMENTS



Recyclable



Durable



20 years  
guarantee



Made in  
USA

ENDUREED REGIONS SERIES



## **ENDUREED REGIONS BALI:** East Asia Islands

A loosely tapered, slightly longer shingle creates the appearance of east Asian grass thatching, typically installed with thick Balinese style hips and a loose eave to create the island paradise look.

Standard color: Harvest Beige

Eave Styles: Typically installed using island eave bends





Regions Bali







## **ENDUREED REGIONS CAPETOWN:** South Africa

This trimmed, coarsely textured and longer reed gives the look and feel of African Yellow Grass or “Cape Reed” - the typical African style thatching.

Standard color: Desert Tan

Eave Styles: Eave Wadd





Regions Capetown







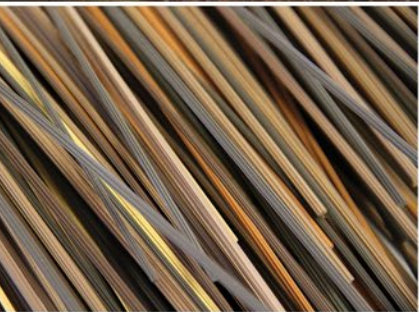
## **ENDUREED REGIONS KILIMANJARO:** African Reed Thatch, Central Africa

A heavy reed texture and stunning color blend make Kilimanjaro the perfect material for replicating a traditional weathered African cape reed roof.

Standard color: Cafe Brown

Eave Styles: Eave Wadd





Regions Kilimanjaro







## ENDUREED REGIONS SOMERSET: Europe

This closely tapered and slightly weathered coloration of this shingle resemble typical hand trimmed European thatching. Designed for use with our patented eave wadd, Somerset provides a perfect replication of the quintessential cottage appearance.

Standard color: Faded Khaki

Eave Styles: Eave Wadd





Regions Somerset







## **ENDUREED REGIONS KONA:** Pacific Ocean Islands

Designed to replicate the Hawaiian “Pili Grass” and Asian Alang-Alang grass thatching, Kona is a unique blend of both a wide leaf and smaller grass reed, creating a beautifully textured, thick, tropical look.

Standard color: Honeycomb Gray

Eave Styles: Island Eave or Trimmed Eave Wadd









## **ENDUREED REGIONS DOMINICA:** Caribbean Island

Dominica recreates the look and feel of the natural palm leaf thatching commonly used in tropical regions around the world.

Standard color: Driftwood Brown  
Eave Styles: Island Eave





*Regions Dominica*







**ENDUREED.**  
**VIVA SERIES**

Endureed introduces its very latest innovative product that fits virtually any thatching need: a 20-year product that is **independently waterproof**, fire-rated and works with any structure. Whether you have a backyard tiki hut, or a five-star resort at the world's most popular vacation destination, this simple, high-quality product is a **brilliant thatching solution**.

**Premium aesthetics meet affordability**

 **ENDUREED.**  
by global innovation





## PERFORMANCE ADVANTAGES

- Ease of installation
- 100% rain, snow and mildew proof
- Impervious to insects, birds and pests
- Hurricane wind rated up to Category 5
- 100% recyclable
- 100% waterproof on open frame structures
- Fastest shipping in the industry

## AESTHETIC ADVANTAGES

- Stunning, life-like designs and high-tech materials ensure true color, shape and texture
- Variable assembly recreates nature's subtleties and beauty
- Original appearance is guaranteed for 20 years
- No color pattern repeat

## QUALITY/DURABILITY ADVANTAGES

- 20-year warranty against rot, decay, delamination, color fade and UV degradation
- High-grade HDPE compound
- U.S. Class A fire rating
- No netting required
- Manufactured in the U.S.A







# INSPIRED, NATURALLY

We're continually pouring our efforts into making products that reflect the beauty of traditional natural materials. From precise details of color and cut, to roof layout texture, our designs are inspired by nature's spectacular charm. Building on nature's magnificence, we integrate modern materials and engineering to meet stringent building codes and withstand the harshest elements.







## GET THE FACTS...

Does your thatch **burn**?

How long have you been in business?

Does your product **fade**?

Do you have color options?

Are you the **manufacturer**?

Does your product look real?

Do you have drawings?

When was your first project?

What happens in high winds?

What **testing** do you have?

Can you offer design assistance?

## COMPETITION? NOT REALLY.

We welcome comparisons. Put us in the ring with any product on the market, it's easy to see how Endureed outlasts the competition. Our advantages are the reason we remain the leading brand of synthetic thatch anywhere in the world.



What others say...

"The hotel approved Endureed. It's the only one out of the 8 products tested that passed at the fire department real burn test. Plus, it is by far the most convincing product of the lot."

**Michael Angelo Leone**  
Hawaii Architect



# ENDUREED RAISES THE BAR...

With details that make a difference.

HIGHER  
STANDARDS



Actual  
Lifespan

20+ Year  
Zero  
quality issues.

Material  
Quality

Highest grade  
PVC, HDPE,  
100%recyclable  
resins

Fire  
Ratings

100%  
Fireproof  
Class "A"

Wind /  
Storms

Up to 170mph  
Survives  
CAT 5  
Hurricane

Design  
Options

7 styles  
Custom colors  
Custom designs  
available

Country  
of Origin

Only thatch  
made in the  
USA

Installation  
Support

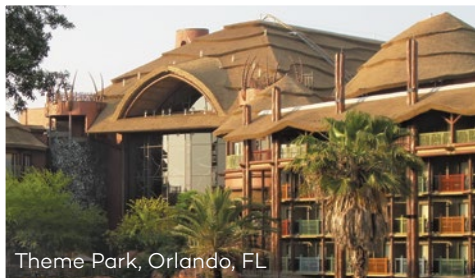
Easy install  
Full in-house  
support and  
on-site training







Koro Sun Resort



Theme Park, Orlando, FL



Necker Island



Nashville Zoo



Theme Hotel, O'ahu, HI

## TRUSTED BY TRUSTED BRANDS

The world's leading amusement and theme parks, resorts, restaurants, pools and finest homes all have chosen Endureed and VIVA. Whether your project is an island-size development or a backyard hut, we have just the product you need, made from the highest quality materials.



# THE WORLD'S BEST

Just a few of our projects across the globe...



## ASIA

Disney Tokyo  
Disney Hong Kong

## EUROPE

Holiday Inn Chessington  
Disney Paris

## PACIFIC ISLANDS

Grand Hyatt  
Cheeseburger in Paradise  
Disney Aulani Resort  
Marriott Ko O'line

## CARIBBEAN

Allan Moe Restaurant Necker Island  
Oil Nut Bay  
Hard Rock Hotel

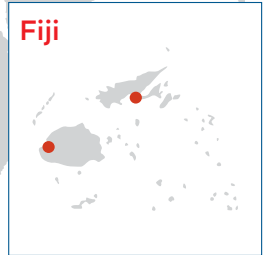
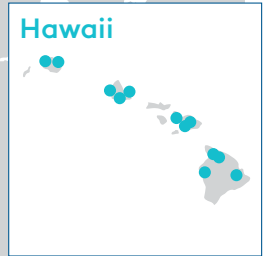
## NORTH AMERICA

Gilligan's Tavern  
Chuy's  
Bronx Zoo  
Clearwater Stadium

Safari Zoo  
Jacksonville Zoo  
Universal Studios  
Nashville Zoo

Disneyland (CA)  
● Kidani Village  
● Kali River  
● Mad Hatter

Disney World (FL)  
● Disney Epcot Japan  
● Disney Kilimanjaro







**PRODUCTS  
YOU CAN TRUST.**

**PEOPLE  
YOU CAN TRUST.**

We think you should feel good about **what** you buy - and just as importantly, **who** you buy it from. Honesty, reliability and making good on our commitments are values we keep at the core of everything we do.

## **HERE TO HELP YOU.**

In fact, **we love helping people**. Whether you need design suggestions, technical details, or anything to help move your project forward, **our team is ready** to go to work for you. With unparalleled **market knowledge** and **outstanding service**, we offer far more than just product sales.





# Meet the Team

A combination of epic talent from around the world.  
People who love making a difference, being creative and having fun!



**Emely Arango**  
Marketing  
Coordinator

**Joel  
Shaheen**  
Factory Production  
Manager

**Lindsey  
Williams**  
Director of  
Accounting

**Jorge Sotres**  
General  
Director,  
Mexico

**Paulina  
Muez**  
Business  
Development,  
Latin America

**Abram  
Huber**  
President

**Angela  
Huber**  
Sales  
Associate

**Luke  
Sparks**  
Senior  
Sales  
Executive

**Cory  
Heitzman**  
Sales  
Associate

**Nick Rimert**  
R&D, Technical  
Director





The original synthetic thatch since 1999

+1.877.784.2824 | [endureed.com](https://endureed.com)